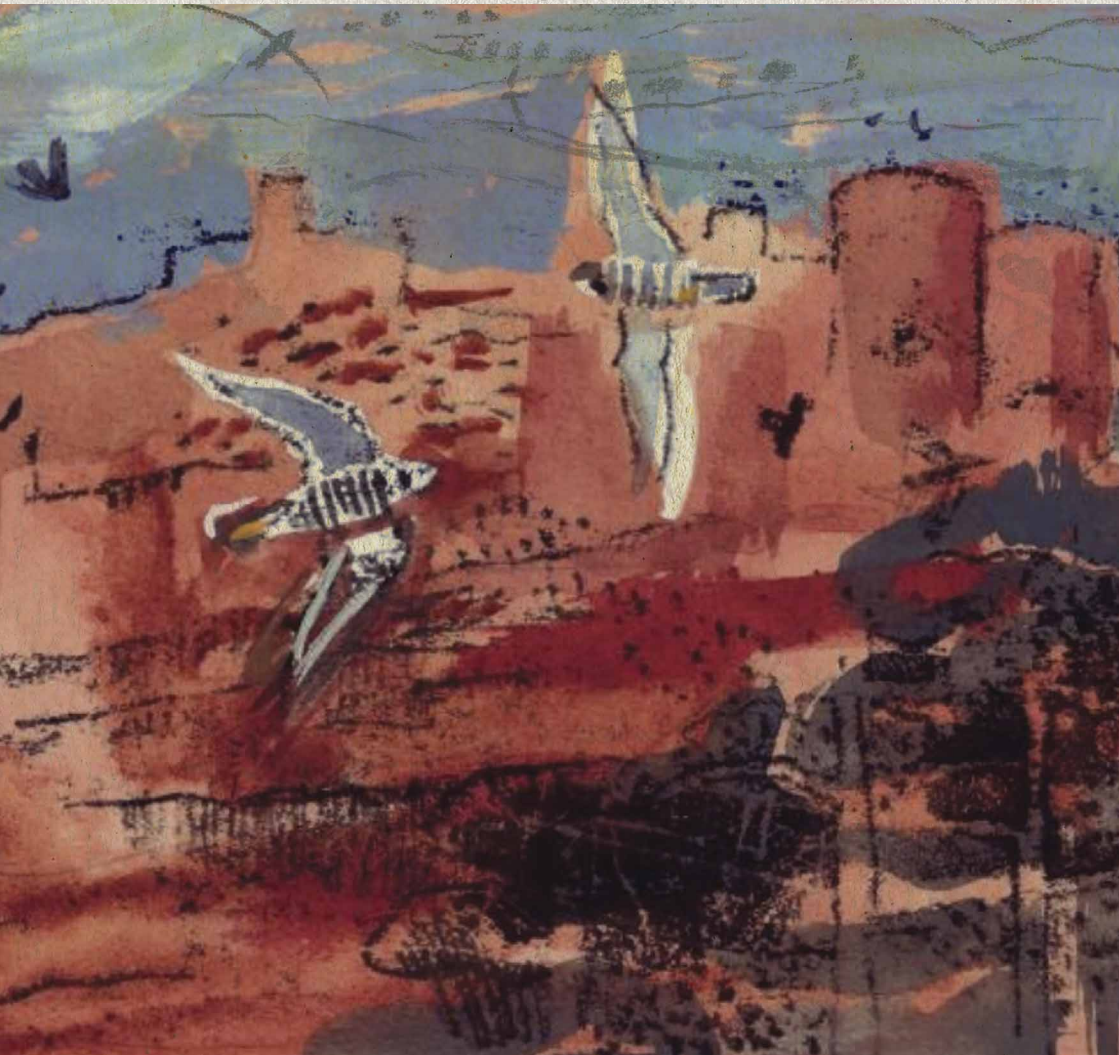




Walk, Talk & Ride Festival

14 - 22 September 2024 Programme of Events



Sandstone Ridge Walk, Talk and Ride Festival

Welcome to the 2024 Walk, Talk & Ride Festival.

You are invited to over 20 events in which to celebrate the natural beauty and heritage of this magical landscape, spread across the full length of the Sandstone Ridge. We have something for everyone, including children and families.

The Cheshire Sandstone Ridge is a special place. Standing prominently above the surrounding plain, it is one of Cheshire's most distinctive landscapes, covering 230 sq km of rolling hills and sandstone escarpments. We are especially pleased this year to welcome to the Festival, John Lindley, a former Cheshire Poet Laureate. John will be exploring the connection between landscape and poetry both as a keynote speaker at our launch event and during two of our poetry workshops.

There are short walks, walks with informative talks, visits to learn more about our resident beavers and bats, visits to castles, gardens, woodlands and wetlands, family adventures and full-day rambles for the more experienced walkers. Walks will explore a diverse range of subjects, such as natural history, geology, forest management, flood prevention and history. In addition, we will be offering two cycle rides.

Each event is led by an experienced leader, either from a partner organisation, individual experts or volunteers.



A new National Landscape?

The Cheshire Sandstone Ridge is currently at a landmark point in an ambitious and creative designation process to safeguard this beautiful landscape for future generations. In 2021 the Ridge was shortlisted by Natural England for designation as an Area of Outstanding Natural Beauty (AONB). Since then, all AONBs in the country have had their name changed to “National Landscapes” but this process of designation by Natural England and its consultants has continued.

The area identified for evaluation includes all of the area shown on our map (centre spread) from Frodsham to Malpas and our visitors are invited to enjoy for themselves the value of the distant views, geological and cultural landmarks, flora and fauna, links to the past and access to an unspoilt countryside that this beautiful landscape provides.

When the designation process reaches the stage of a public consultation everyone will have an opportunity to contribute their views, and the Sandstone Ridge Trust would welcome all of our residents’ and visitors’ full participation in the process.



Guidance and Information

Booking requirements

All events are free of charge, but participants **MUST** pre-book onto each event to determine numbers and to assist Leaders with coordination and for health and safety purposes. Also it allows us to pass on any last minute information. Numbers for each event are limited and you are advised to book as soon as possible. Booking is via Ticket Tailor (<https://buytickets.at/thesandstoneridgetrust/1339531>) unless otherwise specified. This link, along with details on how to make your booking, can also be found on our Sandstone Ridge website and Facebook page. All events were correct at time of press but please check website for any changes prior to booking.

Scan me



Equipment

Please ensure that you are wearing suitable clothing and footwear for all events and weather conditions on the day, and bring sun cream, hat and drinks/snacks as appropriate.

Personal health and safety

For the safety and enjoyment of others, please ensure that you are physically capable of undertaking the event activity. Please make your event Leader aware of any medical conditions that could impact on your participation. Leaders may ask you not to participate if they feel you are unsuitably dressed or are unable to undertake the event safely.

Risk

Whilst risk assessments have been carried out for each activity, please note that **all events are undertaken at your own risk**. You are responsible for any equipment, children and animals in your care. The organisers **will not** accept responsibility for any loss or damage to personal property, or any injury, however caused.

Event advice

Please try to arrive in plenty of time before the event as Leaders will not wait and will set off promptly at the notified time. Some Leaders may wish to brief participants about any issues or conditions before setting off.

Cancellations

Please note that it may be necessary to cancel an event at less than 24 hours' notice due to a low uptake, adverse weather conditions or sudden illness and we will do our best to contact you to advise if that is the case.



Children

Children of all ages are welcome unless otherwise specified on event details. Children must always be accompanied by a parent or carer. For the safety and enjoyment of everyone, parents or carers should ensure that their children can undertake the activity, and that it is appropriate for their age and ability.

Dogs

Well behaved dogs that are calm and safe around other dogs, and families with young children, are also welcome unless specified. Dogs must always be kept on a short lead. Please ensure that you pick up and dispose of any of their dog poo responsibly.

Event length

Please note timings are approximate and all finish times will be dependent on the numbers and the speed of the event participants.

Cost

Unless otherwise indicated, all events are provided free of charge. N.B. there may be a cost for parking.

Parking

Please park considerately for the benefit of fellow participants and local residents.

Public transport

Several of the events are close to public transport, including Frodsham railway station, (events 3, 5 and 20) and Delamere railway station (events 4, 13 and 14). Whilst some advice may have been provided, you are responsible for checking any public transport times and locations to ensure that you can get to and from an event within the specified times.


Dropping out

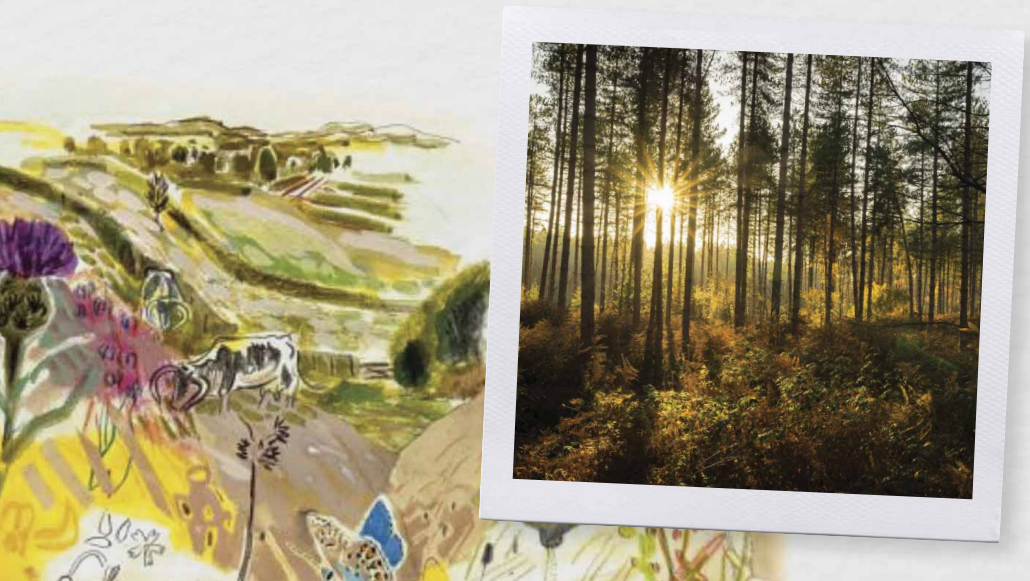
If you wish to drop out of an event at any point, please let the event Leader know before leaving.

Key

 Walk

 Poetry

 Cycle



Saturday 14 September



Slowing the Flow- Mill Brook Natural Flood Management Scheme

Leader: Andrew Hull, Sandstone Ridge Trust

A walk to explore the flood prevention measures on the Mill Brook, Tattenhall, where 28 properties in the heart of the village are susceptible to flooding.

Uneven ground and a gentle slope but no stiles. Walking boots or wellies desirable. Livestock present so no dogs, please.

Distance and grade: 2 miles. Gentle

Start: 10.00

Finish: 12.30

Location and parking: The Barbour Institute, High Street, Tattenhall, CH3 9PX Parking on site or A41 Bus Chester/Whitchurch

What 3 Words:

<https://what3words.com/singers.superhero.ironic>



Eddisbury Hillfort and the Old Pale

Leader: Peter Winn, Sandstone Ridge Trust

A walk through ancient history, climbing up to the Old Pale Heights, and then to the Iron Age Hillfort on Eddisbury Hill, returning along the route of the Roman Road and passing The King's Chair the site of mediaeval quarrying. Dogs on a lead, please.

Distance and grade: 4 miles. Moderate

Start: 13.30

Finish: 16.30

Location and parking: The Yeld Car Park, Yeld Lane, Kelsall, CW6 OSZ

What 3 Words:

<https://what3words.com/ranch.baths.waltz>



Sunday 15 September



Sandstone Bike Ride North

Leader: Sue Booth, Cycling UK

Starting in Frodsham, we follow the course of the Sandstone Trail using roads, past Delamere Forest and through Kelsall, heading to Cotebrook, where we can have refreshments at the Shire Horse Centre. We return via Sandiway and Crowton to drop back to Frodsham for mid-afternoon.

Distance and grade: 30 miles, moderate (cycle to the slowest rider)

Start: 9.30 for a 10am start

Finish: 15.00

Location and parking: Frodsham, Costa Coffee near the railway station. 14 Church St, Frodsham WA6 6QL

What 3 Words:

<https://what3words.com/acute.deflection.valve>



Forest Explorers Family Day

Leader: Helena Broadbent, Forest Explorers

Join the Forest Explorers rangers for a family fun morning in the forest. Explore the forest with a ranger, build shelters and toast marshmallows. The session is aimed at primary school children, but younger and older siblings are more than welcome to attend. All children must be accompanied by a participating adult.

Distance and grade: Easy

Start: 10.00

Finish: 12.30

Location and parking: Delamere Forest Visitor centre, CW8 2JD. Parking fee applies.

What 3 Words:

<https://what3words.com/yacht.airliners.yard>



Quarries of the Northern Sandstone Ridge

Leader: Glyn Morris, Frodsham Festival of Walks

A full day walk from Frodsham along the northern Sandstone Ridge, taking in some of the interesting quarries and workings.

This walk will climb both Frodsham and Helsby Hills, and use woodland and field paths as well as quiet lanes. Stout footwear is required. Each child or vulnerable adult must be accompanied by a responsible adult.

There are no toilets or refreshments available on the route, please bring enough food and especially drink to last all day.

In view of the planned route, no dogs please.

Distance and grade: 8 miles. Moderate

Start: 10.00 **Finish:** 16.00

Location and parking: Frodsham Station car park WA6 7DN – northeast corner (furthest from vehicle entrance).

What 3 Words:

<https://what3words.com/silly.noise.galaxy>

Monday 16 September



Bolesworth Gardens and Rock Walk

Leader: Diana Barbour, Bolesworth Estate

Enjoy The Bridge Walk before the climb up to The Rock Walk, then to the Castle Gardens and lake.

This is a strenuous walk (steep at times) and only suitable for keen walkers. No children under 8 due to steep drops. Well behaved dogs on leads only please.

Distance and grade: Approx 1.5 miles. Moderate

Start: 10.30

Finish: 12.30

Location and parking: Bolesworth Estate, Event Entrance (Gate A), Old Coach Road, Tattenhall, CH3 9JJ. Once on site, please follow the parking signs across the showgrounds in front of the castle where you will be met by the Bolesworth team.

What 3 Words:

<https://what3words.com/snoozing.confirmed.crockery>



Beeston Castle Guided Walk

Leaders: English Heritage staff and volunteers

Guided walk of Beeston Castle exploring the history of the site with English Heritage Volunteers. Dog and family friendly. Steep terrain not accessible to wheelchairs or those with mobility issues.

Distance and grade: Approx 2 miles. Moderate

Start: 11.00

Finish: 13.00

Location and parking: Beeston Castle, CW6 9TX, Visitor Centre Desk. Parking fee £3

What 3 Words:

<https://what3words.com/worthy.chase.haircuts>



Tuesday 17 September



An alternative Sandstone Trail

Leader: David Press, Tarporley Parish Council
From Pudding Lane to Rock Farm. This route follows a central part of the Sandstone Ridge but provides less mud and more interest than the official Sandstone Trail. It is far from flat and includes some stiles and a couple of road crossings. Dogs on leads welcome.

Distance and grade: Approx 6.5 miles. Moderate

Start: 10.00

Finish: 13.30

Location and parking: Meet in lay-by on John Street, between Utkinton and Willington, almost opposite Rock farm. Nearest post code: CW6 0NA. A minibus will take us to the start at Pudding Lane.

What 3 Words:

<https://what3words.com/sprain.slugs.pacifist>



Poetry Workshop with John Lindley

Leader: John Lindley for Sandstone Ridge Trust
Join the former Cheshire Poet Laureate, John Lindley, for a creative workshop on Poetry and Landscape in the comfortable surroundings of the Gifford Lea Inspired Village, close to the attractive village of Tattenhall. All ages and levels of experience are welcome, but places will be strictly limited so early booking is recommended.

Start: 10.00 **Finish:** 12.30

Location and parking: Gifford Lea, The Grange, Davenport Close, Frog Lane, Tattenhall, CH3 9FQ. Good wheelchair access. Parking on site but please avoid parking in Residents' or Reserved spaces.

What 3 Words:

<http://what3words.com/otters.banquets.mega>



Poetry Workshop with John Lindley

Leader: John Lindley for Sandstone Ridge Trust
Join the former Cheshire Poet Laureate, John Lindley, for a creative workshop on Poetry and Landscape in one of the most picturesque villages on the Sandstone Ridge, close to Peckforton Castle, the extraordinary Elephant and Castle sculpture and the ancient "Wesley Oak". All ages and levels of experience are welcome, but places will be strictly limited so early booking is recommended.

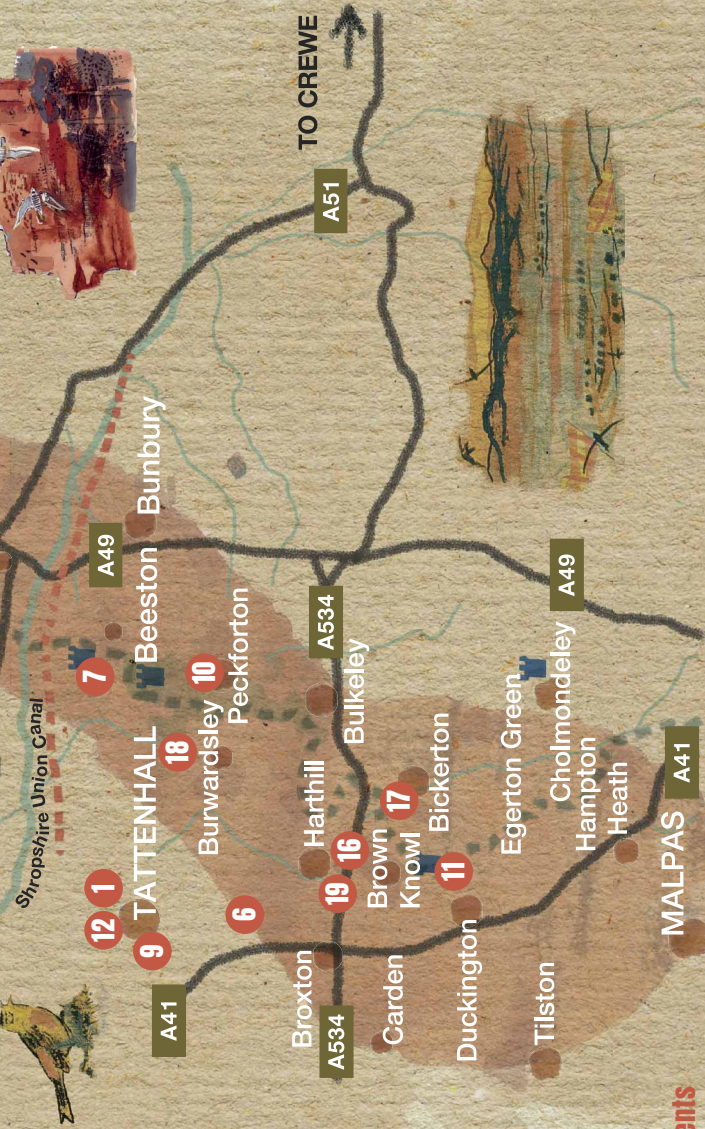
Start: 14.00

Finish: 16.30

Location and parking: Peckforton and Beeston Village Hall. Quarrybank, off Stonehouse Lane, Peckforton CW6 9UH. Parking is behind the hall, approached from Quarrybank. Street and wheelchair access from Hill Lane.

What 3 Words:

<https://what3words.com/procures.uplifting.untrained>



List of Events

- | | | |
|--|---|---|
| <p>1 Mill Brook Natural Flood Management Scheme</p> <p>2 Eddisbury Hillfort and the Old Pale</p> <p>3 Sandstone Bike Ride North</p> <p>4 Forest Explorers Family Day</p> <p>5 Quarries of the Northern Sandstone Ridge</p> <p>6 Bolesworth Gardens and Rock Walk</p> | <p>7 Beeston Castle Guided Walk</p> <p>8 An alternative Sandstone Trail</p> <p>9 Poetry Workshop with John Lindley</p> <p>10 Poetry Workshop with John Lindley</p> <p>11 Bickerton Hill Guided Walk</p> <p>12 Tattenhall Wellbeing Walk</p> <p>13 Forestry Management in Delamere</p> <p>14 The Delamere Beaver Project</p> | <p>15 Frodsham Hill Circular Walk</p> <p>16 Bickerton Hill: Geology and Landscape</p> <p>17 Sandstone Bike Trail South</p> <p>18 Children and Family event - walk with some den building</p> <p>19 Mintopa Nursery Tours</p> <p>20 From Marsh to Moor</p> <p>21 Hatchmere Bat Walk</p> |
|--|---|---|

Wednesday 18 September

11

Bickerton Hill Guided Walk

Leader: Sam Jones, National Trust

An introduction to the history of the site and the National Trust's involvement there, looking at the site features/viewpoints and current management. Walking boots/shoes desirable. Footpaths have some inclines and steps to navigate. Families welcome but not suitable for prams/pushchairs. Dogs are welcome but on leads, please.

Distance and grade: 2 miles. Moderate

Start: 10.30 **Finish:** 12.30

Location and parking: National Trust free car park, off Goldford Lane, Bickerton. SY14 8LN

What 3 Words:

<https://what3words.com/taxpayers.snuggled.seaside>

12 

Tattenhall Wellbeing Walk

Leaders: Charlotte Blythen & Rachel Heath, Healthbox CIC

Join your local Social Prescribers on a gentle wellbeing walk and talk. This event already runs every week, and is popular and accessible for all abilities. There is an option just to do a little loop of the park, or carry on through the Spinney, or you can continue the walk up past the Mill Pond at Tattenhall Hall and the Flacca playing field. Following the walk, you are welcome to join us for coffee, cake and a quiz (with a little focus on the local landscape, history, archaeology, wildlife and culture). This is a family and dog friendly event, with a quiz for adults at the end. Our aim is to enjoy fresh air, have a good natter, and learn about the local area.

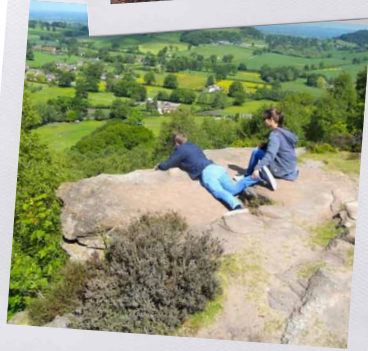
Distance and grade: 0.5 miles to 1.1 miles

Start: 10.30 **Finish:** 12.30

Location and parking: Tattenhall Playground (behind school), Tattenhall Road, CH3 9QH

What 3 Words:

<https://what3words.com/avocado.succeed.sniff>



Thursday 19 September

13 

Forestry Management in Delamere

Leader: Richard Topley, Forestry England

A walk and talk around Delamere Forest, focusing on how Forestry England approach sustainable forest management. All are welcome, including well-behaved dogs.

Distance and grade: 4 miles. Moderate

Start: 10.00

Finish: 12.00

Location and parking: Delamere Forest Visitor Centre, CW8 2JD. Meet under the outdoor canopy near the visitor centre. Parking fee applies.

What 3 Words:

<http://what3words.com/caused.inferior.schooling>

Friday 20 September

14 

The Delamere Beaver Project

Leader: Alice Buller, Cheshire Wildlife Trust

A tour of the Delamere beaver project to discover what Cheshire's beavers have been up to. You will see the impressive beaver dam and learn about the beavers' Hatchmere story. Be aware that day-time sightings of the beavers themselves are very rare. We regret that, due to the terrain, this is not appropriate for people with mobility issues. Waterproof clothing, wellington boots or sturdy walking boots are essential. Avoid wearing strong perfumes and scents. No dogs, please.

Distance and grade: 2 miles. Moderate but wet, difficult terrain

Start: 10.00 **Finish:** 12.00

Location and parking:

Hatchmere Nature Reserve

Meeting point: Lay-bys on Ashton Road just past the houses on edge of Hatchmere Nature Reserve. Nearest Postcode WA6 6NZ

What 3 Words:

<https://what3words.com/remit.emails.radiating>



15 

Frodsham Hill Circular Walk

Leader: Iris Keating for Sandstone Ridge Trust

A circular walk across the old golf course, which is currently being "re-wilded", to Snidley Moor. Some short ascents. Dog friendly, off leash at owners' discretion.

Distance and grade: 5 miles. Moderate

Start: 10.00

Finish: 12.30

Location and parking: Old Golf Course Car Park, now Woodland Trust, off Simons Lane, Frodsham. Plentiful free parking. WA6 6HE

What 3 Words:

<https://what3words.com/trophy.cupboards.hunk>

16 

Bickerton Hill: Geology and Landscape

Leader: Nick Holmes, Sandstone Ridge Trust

A scenic 3-mile walk across Bickerton Hill. Using rock outcrops and viewpoints, we will learn how geological processes, and more recent human activity, have shaped the mid Cheshire landscape we see today. Weather dependent, warm, waterproof clothing and stout footwear recommended. Not suitable for wheelchairs or those with poor walking ability. Sorry, no dogs.

Distance and grade: 3 miles. Moderate

Start: 13.30

Finish: 15.00

Location and parking: National Trust free car park, off Goldford Lane, Bickerton. SY14 8LN

What 3 Words:

<https://what3words.com/taxpayers.snuggled.seaside>

Saturday 21 September



Sandstone Bike Trail South

Leader: Sue Booth, Cycling UK

Following the south end of the Sandstone Trail, this 17 mile route heads to the pub at Willey Moor near Whitchurch. It includes some off-road canal paths, and may be more suitable to families. We do cross the main road (A41) at times.

Distance and grade: 17 miles, gentle to moderate (cycle to the slowest rider)

Start: 9.30 for a 10am start

Finish: 13.00 (including stops)

Location and parking: Bickerton, Village Hall car park, Long Lane, Bickerton, Malpas SY14 8AU

What 3 Words:

<https://what3words.com/standards.embodied.class>



Children and family event - walk with some den building

Leader: Stella Spratley, Conway Centres

Walk from Burwardsley Outdoor Education Centre to the top of Willow Hill and build some dens, before returning to the centre for light lunch (supplied). Also an option to build dens at the bottom of the hill for those less keen on the steep steps.

Aimed at families with children at primary school. No unaccompanied children or unaccompanied adults. Maximum 2 adults per child.

Distance and grade: Max 1.5 miles. Option involving steep steps or less than 1 mile on the flat.

Start: 10.00

Finish: 14.00

Location and parking: Burwardsley Outdoor Education Centre, School Lane, Burwardsley, CH3 9NX

What 3 Words:

<https://what3words.com/duration.ideals.deleting>



Mintopia Nursery Tours

Leader: Simon Poole, Mintopia

Embark on a tantalizing journey into the aromatic world of mint with an exclusive talk introducing the National Plant Collection of Mentha. Discover 187 captivating varieties, from rare species to critically endangered gems. Plus, seize the chance to own your very own unique mint specimen. Don't miss out on this fragrant adventure! Dog and family friendly, but we regret no wheelchair access or toilets available.

Tour 1: 10:30-12:00

Tour 2: 14:00-15:30

Location and parking: Mintopia, Fullersmoor Cottage, Smithy Lane, Brown Knowl, Broxton, Cheshire, CH3 9JY. Nearest parking a short walk at Sandstone Pub on Sherrington Lane & A534.

What 3 Words:

<https://what3words.com/slant.legend.guarding>



Sunday 22 September



From Marsh to Moor

Leader: Garfield Southall, North Cheshire Community Rail Partnership

Motorists along the M56, or passengers on the railway cannot fail to notice the dramatic hills rising from the Cheshire Plain at Helsby and Frodsham but equally interesting are the marshes which lie in front of these hills. There is much history here to investigate and this full-day walk will take in both landscapes, on good tracks across Frodsham Marshes and along Lordship Lane, before a gentle ascent of Helsby Hill. Our return to Frodsham is via forest paths directly under the striking red of the sandstone cliffs. Bring a packed lunch.

It would be possible to catch the train back from Helsby, at roughly half way – the route passes that station.

Distance and grade: 9 miles. Moderate

Start: 10.00

Finish: 15.00

Location and parking: Frodsham Station Car Park, Church Street, WA6 7DN

What 3 Words:

<https://what3words.com/silly.noise.galaxy>



Hatchmere Bat walk

Leader: Tony Parker, Cheshire Bat Conservation Group

An evening walk around the Hatchmere Nature Reserve looking at the various bat species which roost and feed on the site.

Distance and grade: 1.5 miles. Gentle – on public footpaths

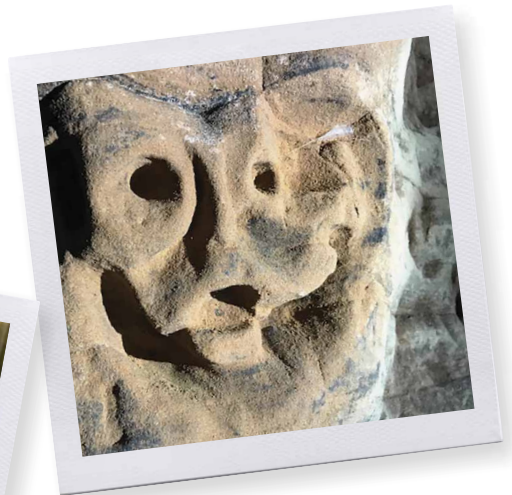
Start: 18.45

Finish: 20.45

Location and parking: Lay-bys on Ashton Road just past the houses on edge of Hatchmere Nature Reserve. Nearest Postcode WA6 6NY. Only accessible by car at this time of day.

What 3 Words:

<https://what3words.com/remit.emails.radiating>



This Festival has been organised by the Sandstone Ridge Trust, which is grateful to all those who have sponsored and supported the festival. In particular, we are indebted to the UK Government who has funded this project through the UK Shared Prosperity Fund.



Funded by
UK Government



Partners and Sponsors

The Festival could not take place without the help and support of our partners and volunteers.

- Bolesworth Estate
- Cheshire Bat Conservation Group
- Cheshire Wildlife Trust
- Conway Centres
- Cycling UK
- English Heritage
- Frodsham Festival of Walks
- Forest Explorers
- Forestry England
- Gifford Lea
- Healthbox CIC
- Mintopia
- National Trust
- North Cheshire Community Rail Partnership
- Tarporley Parish Council
- Tattenhall Wildlife Group

The Sandstone Ridge Trust's vision is to secure the long-term future of Cheshire's Sandstone Ridge for the enjoyment and benefit of present and future generations.

Our mission is to:

- **Conserve** the natural beauty, special qualities and natural resources of the Sandstone Ridge
- **Connect** people with nature, heritage and the rural way of life, and
- **Inspire** current and future generations to better understand and look after this magical landscape

Visit: www.sandstoneridge.org.uk

Scan me

